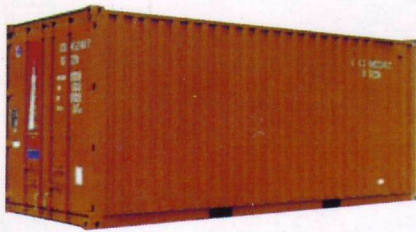


Dry Cargo Container



20' Dry Freight Container

L20' x W8' x H8'6"

Interior Dimensions : L5, 919mm x W2,340mm x H2, 380mm

Door Opening : W2,286mm x H2,278mm

Tare Weight : 4,189 lbs - 1,900 kg

Cubic Capacity : 1,165 cuft - 33.0 cbm

Pay Load : 48,721 lbs - 22,100 kg

20' Open-Top Container

L20' x W8' x H8'6"

Interior Dimensions : L5, 919mm x W2,340mm x H2, 286mm

Door Opening : W2,286mm x H2,251mm

Top Opening : L5,425mm x W2,222mm

Tare Weight : 4,793 lbs - 2,174 kg

Cubic Capacity : 1,116 cuft - 31.6 cbm

Pay Load : 48,117 lbs - 21,826 kg

20' Flatrack Container

L20' x W8' x H8'6" (High Bed)

Interior Dimensions : L5, 662mm x W2,438mm x H2, 327mm

Tare Weight : 5,578 lbs - 2,350 kg

Pay Load : 47,333 lbs - 21,470 kg

40' Dry Freight Container

L40' x W8' x H8'6"

Interior Dimensions : L12, 045mm x W2,309mm x H2, 379mm

Door Opening : W2,289mm x H2,278mm

Tare Weight : 6,799 lbs - 3,048 kg

Cubic Capacity : 2,377 cuft - 67.3 cbm

Pay Load : 60,397 lbs - 27,396 kg

40' Open-Top Container

L20' x W8' x H8'6"

Interior Dimensions : L12, 043mm x W2,340mm x H2, 272mm

Door Opening : W2,279mm x H2,278mm

Top Opening : L11,585mm x W2,162mm

Tare Weight : 9,480 lbs - 4,300 kg

Cubic Capacity : 2,260 cuft - 64.0 cbm

Pay Load : 57,720 lbs - 26,181 kg

40' Flatrack Container

L20' x W8' x H8'6"

Interior Dimensions : L12, 080mm x W2,438mm x H2, 103mm

Tare Weight : 12,081 lbs - 5,480 kg

Pay Load : 55,115 lbs - 25,000 kg

